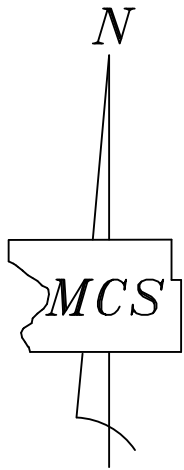
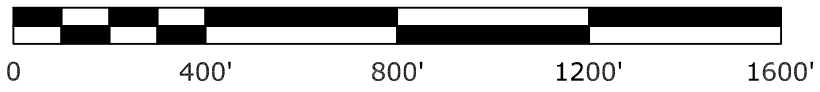


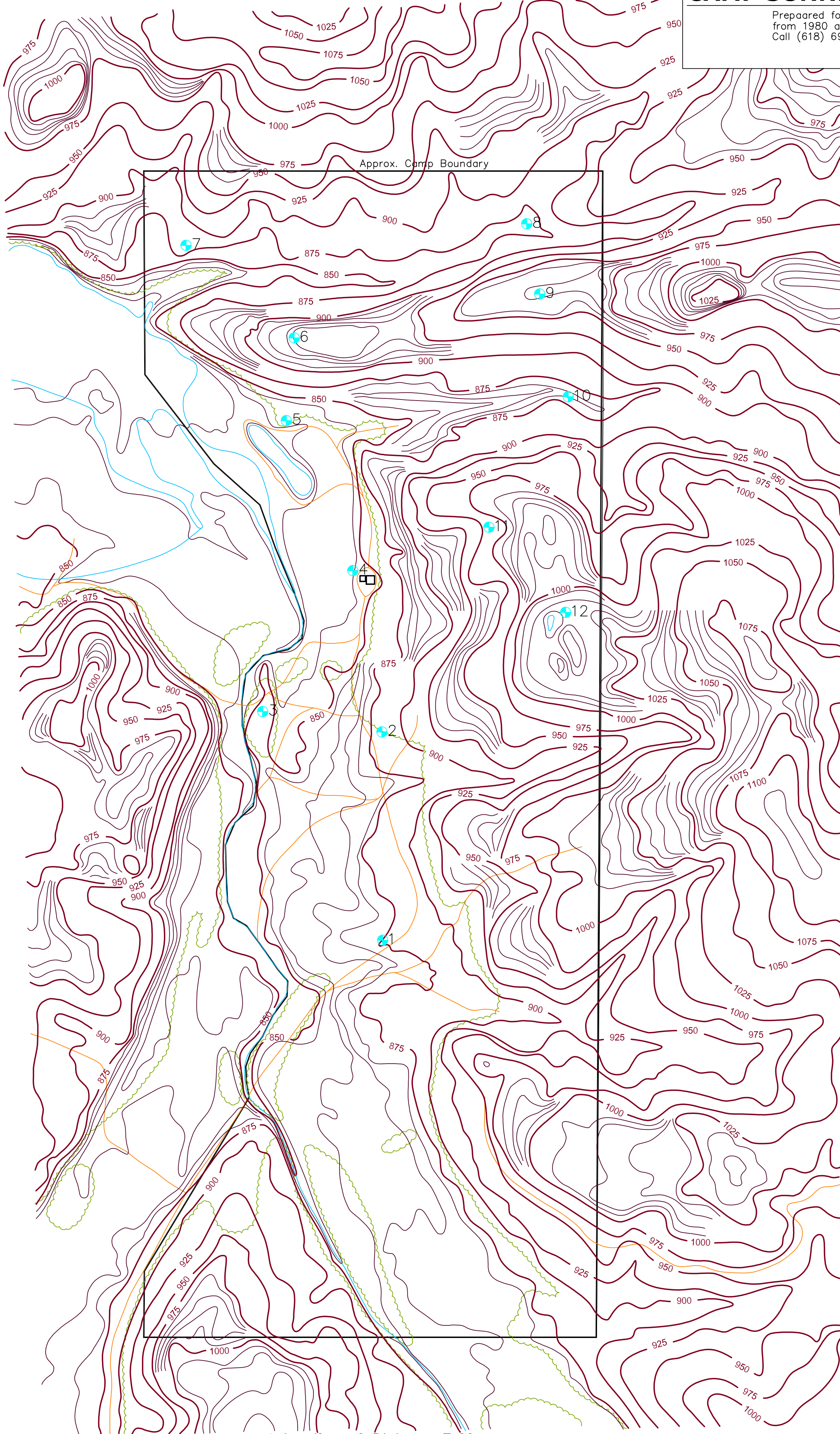
GRAPHIC SCALE: 1" = 400'



Jim Pauk Memorial Orienteering Course

CAMP SUNNEN, Shirley, MO

Prepared for Madison County Surveyors, Inc.
 from 1980 aerial photography
 Call (618) 692-4414 with questions



Azimuth and Distance Table

From/To	1	2	3	4	5	6	7	8	9	10	11	12	Latitude	Longitude														
1	180°	X	0°	1210'	333°	1500'	350°	2150'	350°	3080'	352°	3530'	345°	4190'	12°	4240'	14°	3880'	20°	3330'	15°	2470'	50°	2180'	37°	55.924	90°	54.844
2	180°	X	0°	1210'	333°	1500'	350°	2150'	350°	3080'	352°	3530'	345°	4190'	12°	4240'	14°	3880'	20°	3330'	15°	2470'	50°	2180'	37°	55.923	90°	54.846
3	153°	1500'	100°	700'	280°	700'	350°	950'	344°	1890'	348°	2340'	339°	3040'	17°	3080'	21°	2700'	30°	2220'	28°	1340'	58°	1270'	57°	55.823	90°	54.930
4	178°	2050'	170°	350'	213°	970'	337°	970'	347°	1690'	347°	1390'	334°	2120'	22°	2220'	38°	2910'	45°	2540'	52°	1690'	73°	1850'	37°	55.842	90°	54.922
5	170°	3080'	184°	1890'	185°	1690'	157°	950'	337°	950'	347°	1390'	334°	2120'	22°	2220'	38°	2910'	45°	2540'	52°	1690'	73°	1850'	37°	56.120	90°	54.963
6	172°	3530'	168°	2340'	186°	2170'	187°	1390'	186°	480'	311°	830'	311°	830'	65°	1500'	81°	1450'	103°	1630'	135°	1570'	138°	2240'	37°	56.199	90°	54.954
7	165°	4190'	159°	3040'	171°	2140'	154°	2120'	151°	1170'	131°	830'	311°	830'	87°	1980'	90°	3270'	112°	2380'	134°	2450'	135°	3040'	37°	56.287	90°	55.085
8	192°	4240'	197°	3080'	209°	3220'	207°	2250'	231°	1800'	245°	1500'	267°	1980'	87°	1980'	90°	3270'	112°	2380'	134°	2450'	135°	3040'	37°	56.309	90°	54.974
9	184°	3860'	201°	2700'	214°	2910'	219°	1840'	244°	1640'	261°	1450'	279°	2070'	350°	410'	X	X	112°	2380'	134°	2450'	135°	3040'	37°	56.242	90°	54.658
10	200°	3330'	210°	2220'	225°	2540'	232°	1610'	268°	1640'	283°	1630'	292°	2380'	347°	1530'	345°	620'	112°	2380'	134°	2450'	135°	3040'	37°	56.144	90°	54.923
11	185°	2470'	208°	1340'	232°	1690'	232°	630'	298°	1330'	312°	1970'	314°	2400'	314°	1770'	13°	1380'	32°	890'	X	X	139°	690'	37°	56.019	90°	54.918
12	210°	2180'	238°	1270'	253°	1850'	282°	1260'	305°	1880'	316°	2240'	315°	3080'	355°	2260'	356°	1830'	1°	1250'	319°	660'	X	X	37°	55.938	90°	54.625